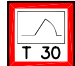
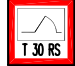





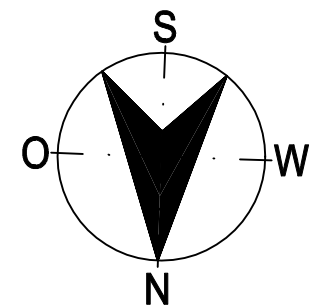
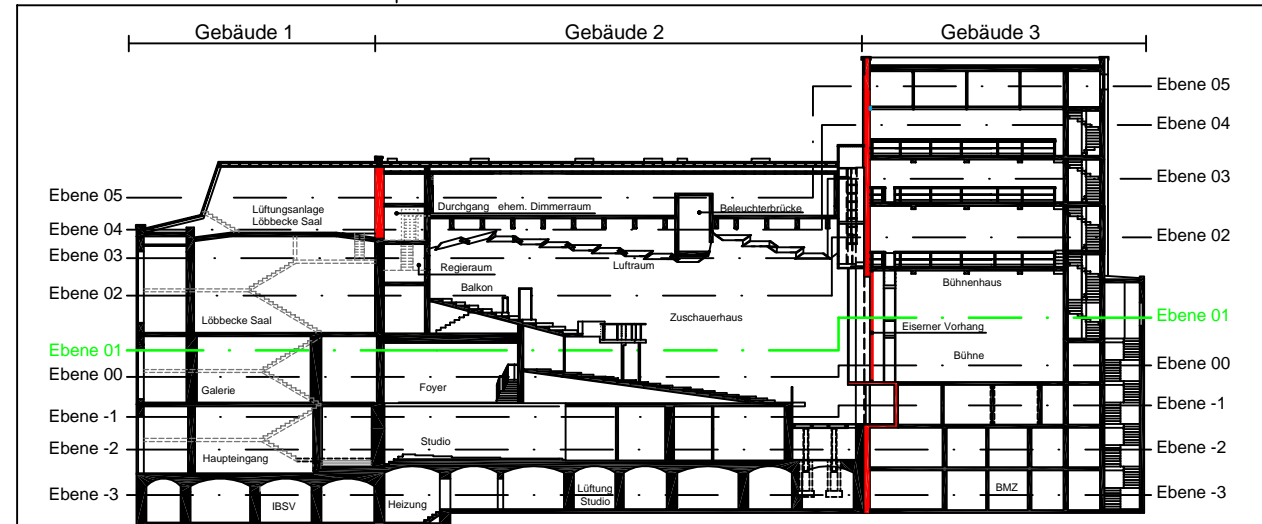


Legende

-  Brandschutztür
-  Brandschutztür Rauchschturtür
-  Rauchschturtür
-  Dachaufstiegsleiter
-  Brandschutzwand
-  NRA-Einrichtung
-  NRA Bedienstelle



Parktheater	R 10 x 10
Ebene 01	Plan 12 von 17
Gebäude 1, 2 und 3	-3+E+5
0071-02-F12	Index 01 September 2004
HausTec Andreas Reintke - Frank Wortmann GbR Planungsbüro für Technische Gebäudeausrüstung Haubergweg 1 - 58640 Iserlohn - Tel.: 02371-953255	